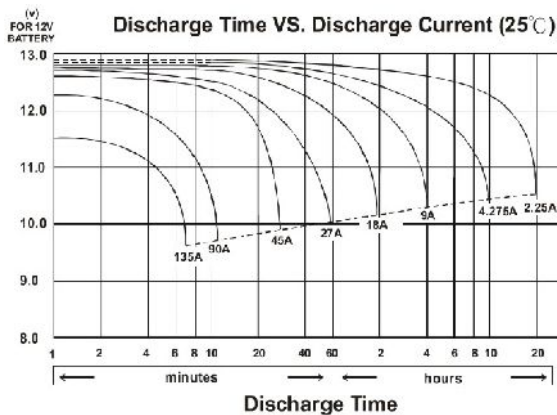
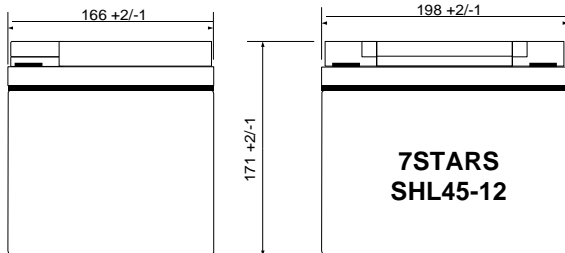
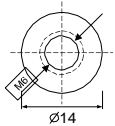


Valve Regulated Lead Acid Batteries, AGM Technology



F8 (M6 Bolt)



SPECIFICATION

Nominal Voltage (V)	12V	
Nominal Capacity	20 hour rate	45Ah
	10 hour rate	42.75Ah
	5 hour rate	38.25Ah
	1C	25.5Ah
	3C	18.0Ah

Weight 14.5kg

Internal Resistance 7mΩ @ 1kHz

Maximum Discharge Current for 5 sec. 375A

Operating Temperature Range
 Charge 0°C ÷ 40°C
 Discharge -15°C ÷ 50°C
 Storage -15°C ÷ 40°C

Charge Retention (shelf life) at 20°C
 1 month 98%
 3 month 94%
 6 month 85%

Charging Methods at 20°C
 Cycle use:
 Charging Voltage 14.4 ÷ 15.0V
 Max. Charging Current 13.5A
 Standby use:
 Float Charging Voltage 13.50 ÷ 13.80V

Life expectancy
Cycle Use
 100% depth of discharge 200 cycles
 80% depth of discharge 225 cycles
 50% depth of discharge 500 cycles
Standby Use 10 years

Case Material ABS
Terminal F8 (M6 Bolt)
 Recommended torque value 5.39Nm (55kg-cm)
 Maximum torque value 8.82Nm (90kg-cm)

Constant Power Discharge Characteristics (25°C) [Watt]

Cut Off V	Time										
	5 min.	10 min.	15 min.	30 min.	1 hour	2 hours	3 hours	4 hours	5 hours	10 hours	20 hours
11.1	1399	890	694	372	293	154	123	98.4	84.0	49.4	26.0
10.8	1683	1071	816	438	311	164	131	104	89.1	52.4	27.6
10.5	1884	1199	901	483	321	169	135	108	92.2	54.2	28.6
10.2	2014	1281	955	512	329	174	138	111	94.4	55.6	29.3
9.90	2085	1327	985	528	336	177	141	113	96.3	56.6	29.9
9.60	2122	1350	1001	537	338	178	142	114	97.1	57.1	30.1